



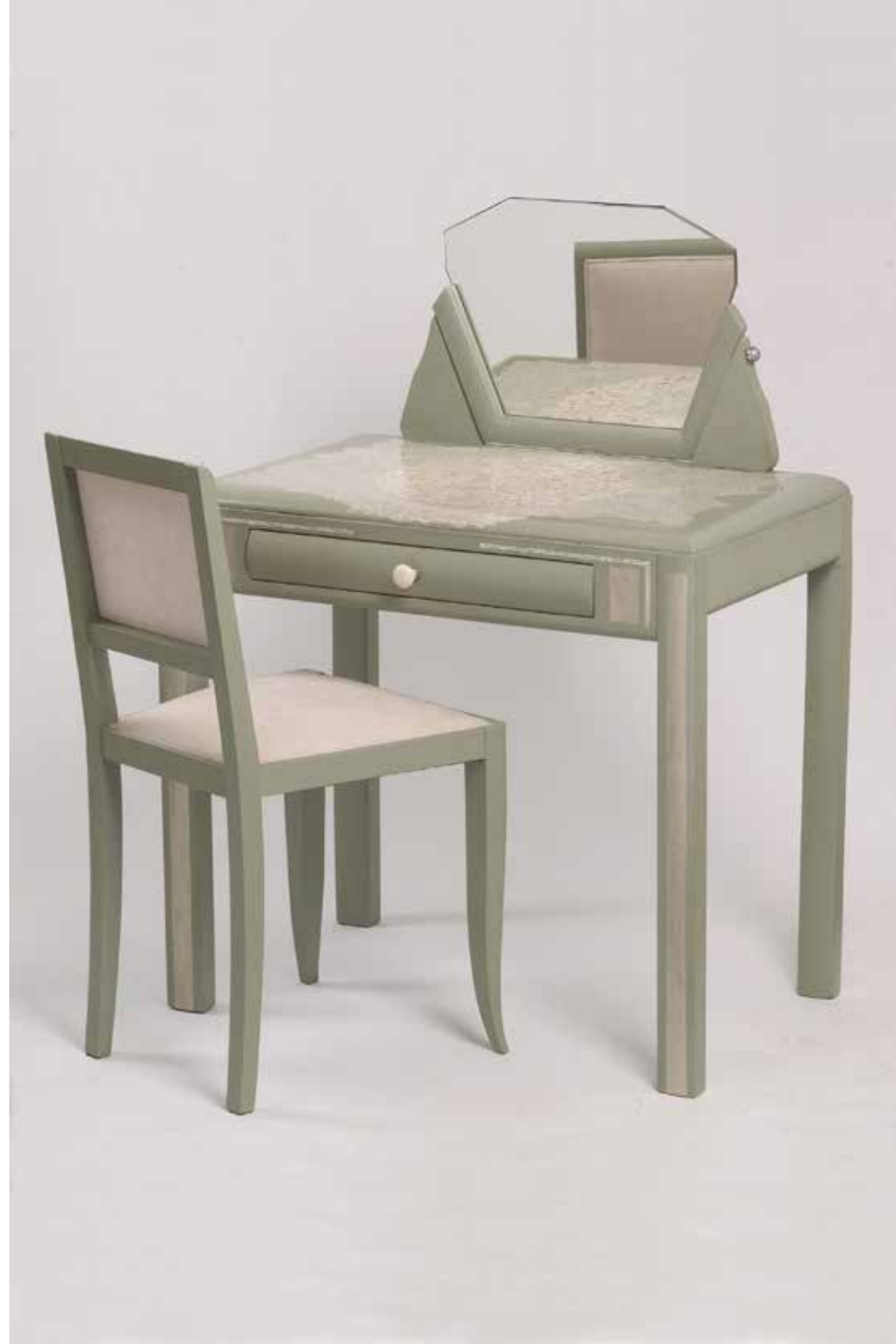
FURNITURES

# NATURE COLLECTION

Dressing Table (Custom made piece from a 1920's inspiration)

Dimension HxLxP            90 x 90 x 56 cm  
Tints                         Ultramarine, nacre, yellow gold,  
                                     yellow ochre pigments.

Lacquered piece with eggshell inlays on the top and front  
Painted motifs (nacre-gold) on legs  
Resin drawer pull  
Chair upholstery in ivory-white Alacantara

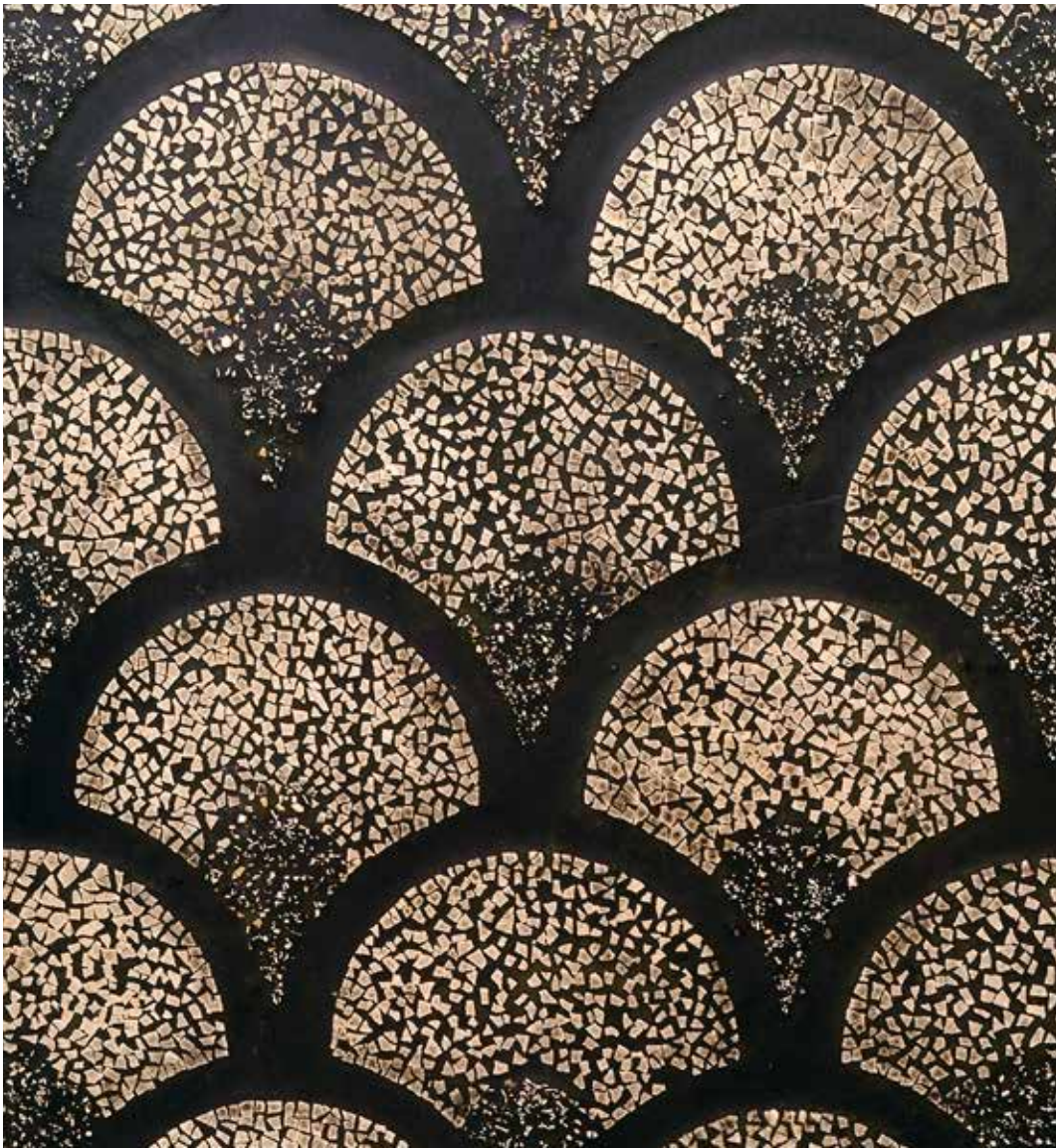




Commode (Vintage couture piece from the 1930's)

Dimension HxLxP 79 x 58 x 45 cm  
Tints Ivory black, prussian blue, lemon yellow, yellow ochre pigments.

Lacquered piece with eggshell inlays on the front  
Push button opening situated top right





Nest of tables (Custom made piece)

Dimension HxLxP

53 x 26 x 26 cm

Tints

Black ivory, gold, mineral blue, nacre white and natural umber pigments.

Faux-shagreen covered pieces.

Fronts and drawer lacquered with blue eggshells inlays.

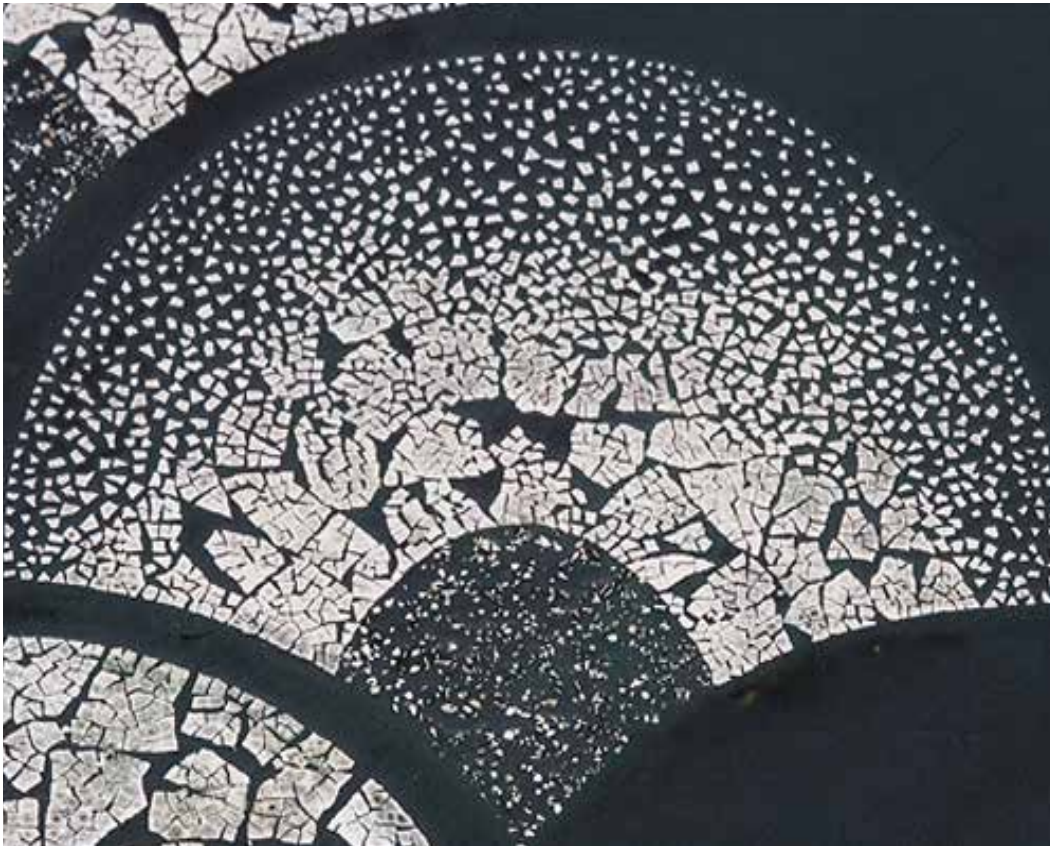
Ebony and moonstone drawer pull.



Low Table (Custom made piece)

Dimension HxLxP 40 x 100 x 55 cm  
Tints Ivory black, green earth, nacre  
lemon yellow pigments

Lacquered piece with eggshell inlays on each tier and the front of one leg





Low Table (Custom made piece)

Dimension HxLxP  
Tints

30 x 80 x 48 cm  
Wood stain : black, natural umber,  
van dike brown pigments  
Sharkskin : ultramarine, mid-yellow,  
natural umber pigments

Faux-shagreen covered table ; gold paper on legs between rayskin sections



EARTH COLLECTION



Cupboard (Custom made piece)

Dimension HxLxP 130 x 60 x 40 cm

Tints Rayskin : yellow ochre, nacre,  
natural umber, red ochre pigments

Faux-shagreen covered cupboard

Brass door pull



Bedside Table (Vintage piece from the 1940's)

Dimension HxLxP      57 x 46 x 40 cm  
Tints                      White, nacre pigments

Faux-shagreen and lacquer piece with eggshell inlays on the two tiers,  
and moon-gold leaf decoration on the legs  
Silk tassel drawer pull





Low Table (Vintage Chinese Hatbox)

Dimension HxDia 36 x 37 cm

Tints Nacre, natural umber, white pigments.

Lacquered piece with eggshells inlays. Felt interior lining.





Bedside Table (Vintage piece from the 1940's)

Dimension HxLxP  
Tints

67 x 35 x 35 cm  
Tints: nacre, natural umber, yellow ochre, white pigments.

Lacquered piece with eggshell inlays on the top and legs. Drawer pull of white resin. Door pull of silk tassel on a bone pearl.



Bedside Table (Vintage piece from the 1940's)

Dimension HxLxP  
Tints

55 x 50 x 34 cm  
Lacquer: white and ultramarine pigments Faux-shagreen: gold pigment.

Lacquered piece with Faux-shagreen. Brass drawer pull.

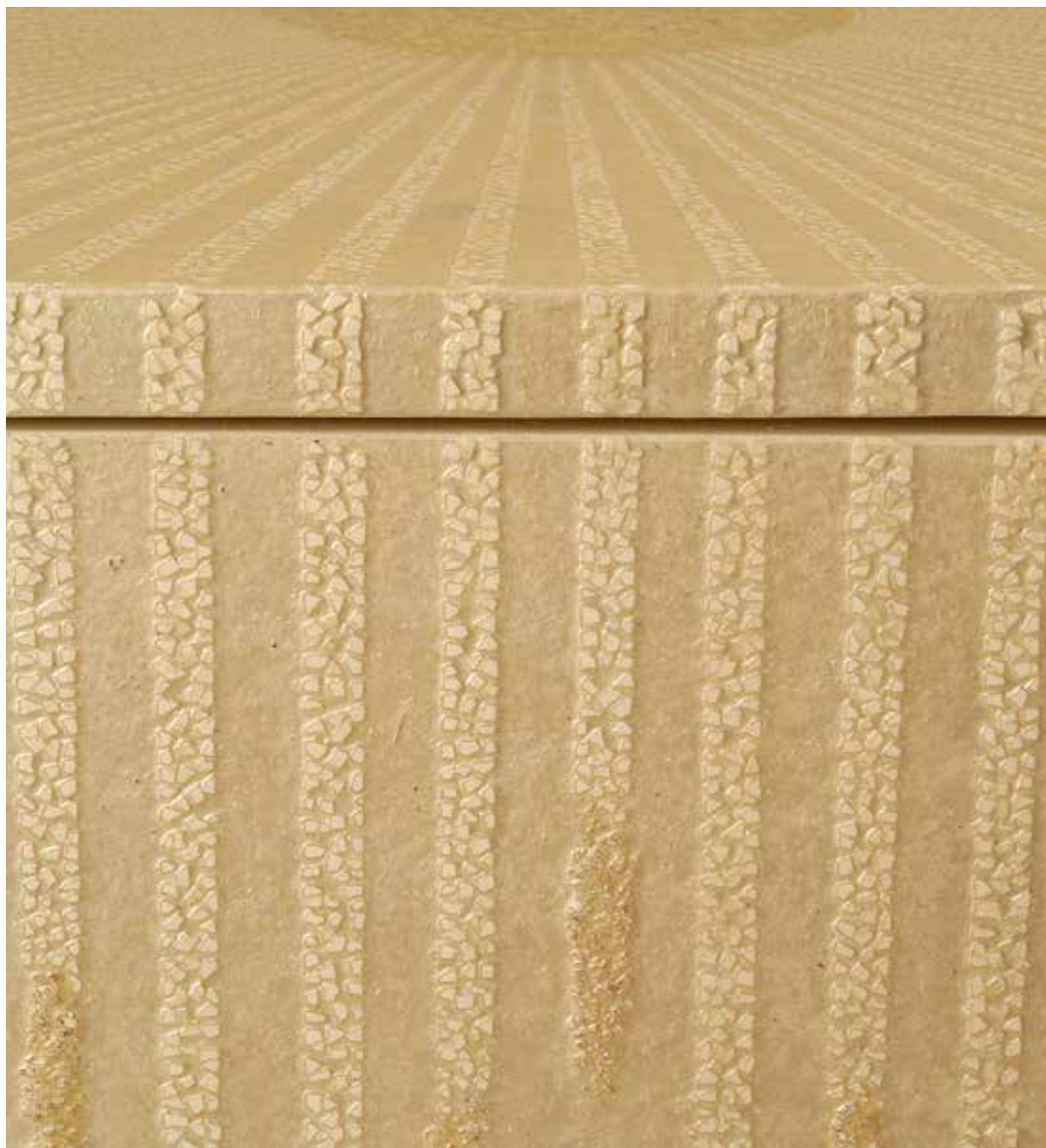




Commode (Vintage piece from the 1950's)

Dimension HxLxP 75 x 57 x 43 cm  
Tints gold, nacre, white.

Lacquered piece with eggshell inlays on the top and sides. Opens by gilded brass button situated top right.





## NIGHT COLLECTION

Console Table (Vintage piece from Beijing)

Dimension HxLxP  
Tints

76 x 38 x 38 cm  
Ivory black, blue & gold pigments

Faux-shagreen covered console.



Semainier chest (Vintage piece from the 1950's)

Dimension HxLxP 140 x 50 x 26 cm  
Tints Ivory black pigment

Lacquered piece with eggshell inlays on the front and drawers  
Brass drawer knobs





Chiffonier (Vintage piece from the 1950's)

Dimension HxLxP      80 x 50 x 40 cm  
Tints                    Ivory black, prussian blue pigments

Lacquered piece with silk fabric bonded to the top, sides and drawer fronts

Brass drawer knobs

Silk : the Manuel Canovas Collection





Console Table (Vintage piece from the 1920's)

Dimension HxLxP  
Tints

85 x 51 x 34 cm  
Ivory black, natural umber, gold pigments

Lacquered piece with moon-gold leaf decoration on the top, front and legs.  
Detail on Faux-shagreen.





Low Table (Custom made piece)

Dimension HxLxP      90 x 25 x 90 cm  
Tints                      Black ivory pigments

Low table tinted and waxed with embroidered fabrics Miao on four sides.  
These fabrics come from Kaili city of Guizhou Province.



Low Table (Vintage piece from the 1940's)

Dimension HxLxP      56 x 54 x 54 cm  
Tints                      Ivory black pigment

Lacquered piece with eggshell inlays





Low Table (Custom made piece from a 1930 inspiration)

Dimension HxDia        58 x 54 cm  
Tints                      Ivory black pigment

Lacquered piece with eggshell inlays on the top and legs



## Low Table (Vintage Chinese Hatbox)

Dimension HxDia

37 x 41 cm

Tints

Eggshells : Nacre, natural umber, white pigments.

Non-organic rayskin : Black ivory pigments.

Faux-shagreen covered piece and lacquered piece with eggshells inlays on the top.  
Felt interior lining.





## Low Table (Vintage Chinese Hatbox)

Dimension HxDia

37 x 41 cm

Tints

Non-organic rayskin : Black ivory and blue pigments.

Faux-shagreen covered piece and lacquered piece with eggshells inlays on the top with goldleaves.

Felt interior lining.



## Low Table (Vintage Chinese Hatbox)

Dimension HxDia

37 x 41 cm

Tints

Eggshells : Black ivory pigments.

Non-organic rayskin : Brown, Nacre, red pigments.

Faux-shagreen covered piece and lacquered piece with eggshells inlays on the top. Felt interior lining.

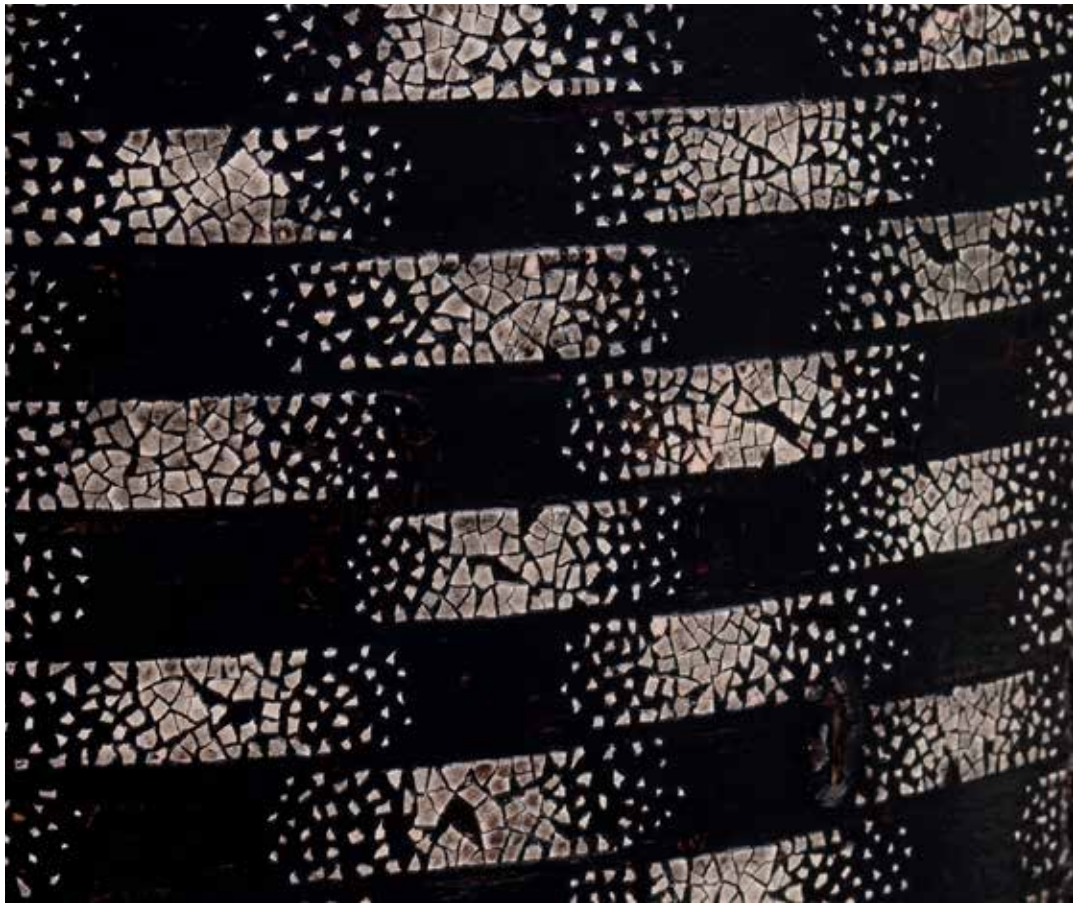




Low Table (Vintage Chinese Hatbox)

Dimension HxDia        36 x 37 cm  
Tints                    Nacre, natural umber, white pigments.

Lacquered piece with eggshells inlays. Felt interior lining.



gcdkdesign@hotmail.com  
ID wechat : gwendeker  
www.gcdkdesign.com



CHINA - BEIJING

DONGCHENG DIST. 100007 CAOYUAN HUTONG 76

中国 北京 东城区 100007 草园胡同 76

B号楼第05层505

FRANCE - PARIS

16 RUE DE LA FORGE ROYALE, 75011